

بسم الله الرحمن الرحيم

کتابخانه مرکزی

راهنمای جستجو در

پایگاه استنادی web of science

تهیه کننده : ناهید حسینی چگنی (مسئول کتابخانه مرکزی)

کارشناس ارشد مدیریت اطلاعات

تابستان و پاییز ۱۳۹۹

web of science

- معتبرترین پایگاه داده استنادی جهانی
- از میراث دکتر یوجین گارفیلد ، مخترع اولین فهرست استنادی در جهان
- در web of science
- جستجو در همه نویسندگان و همه وابستگی های نویسنده.
- فعالیت استناد را با هشدارهای استناد دنبال کنید.
- فعالیت استنادی و روندها را با گزارش استناد به صورت نمودار مشاهده کنید.
- برای شناسایی روندها و الگوهای انتشار از تجزیه و تحلیل نتایج استفاده کنید.

ورود به پایگاه:

پورتال دیجیتال: Diglib.lums.ac.ir

صفحه اصلی معاونت ها حوزه ریاست دانشکده ها مراکز تحقیقاتی سبک ها مراکز آموزشی درمانی بیمارستانها مدیریت ها خدمات الکترونیک

درباره کتابخانه دیجیتال

با توجه به اهمیت و ضرورت دسترسی دانشگاه‌های علوم پزشکی کشور به منابع اطلاعاتی الکترونیک و نقش بنیادی این منابع در دستیابی به اهداف برنامه پنجم توسعه و نیز سیاست‌های کلان وزارت بهداشت و با در نظر گرفتن اهمیت و ضرورت دسترسی به این منابع به عنوان زیرساخت‌های پژوهشی و آموزشی کشور، کنسرسیوم تامین منابع الکترونیک در حوزه معاونت تحقیقات و فناوری وزارت بهداشت، درمان و آموزش پزشکی شکل گرفته است. هدف اصلی تشکیل این کنسرسیوم، فراهم نمودن زمینه لازم جهت تامین دسترسی پایدار همه گروه‌های دانشگاه‌های علوم پزشکی به جدیدترین و معتبرترین منابع علمی پژوهشی، آموزشی و درمانی است.

به وب سایت کتابخانه دیجیتال علوم پزشکی لرستان خوش آمدید

کتابخانه دیجیتال

دسترسی از داخل دانشگاه (منابع الکترونیک)
دسترسی خارج از دانشگاه در ویندوز
دسترسی خارج از دانشگاه از طریق تلن همراه / سیستم عامل (Android گوشی های اندروید)
دسترسی خارج از دانشگاه از طریق تلن همراه / سیستم عامل (IOS گوشی های iPhone)

اخبار و اطلاعیه ها

برگزاری وبینار جستجوی پیشرفته در EBSCO جهت کتابداران دانشگاه
وبینار "آموزش جستجوی پیشرفته در مجموعه EBSCO: dentistry & oral چهارشنبه 1399 / 6 / 12 ساعت 10 صبح جهت کتابداران دانشگاه با ...

برگزاری وبینار "آموزش جستجوی پیشرفته در EBSCO"
وبینار "آموزش جستجوی پیشرفته در مجموعه EBSCO: dentistry@oral یکشنبه ساعت 20 جهت دانشجویان دانشکده دندانپزشکی با تدریس ...

پیوندهای مفید

- سامانه پایان نامه های دانشگاه
- سامانه مدیریت انتشارات دانشگاه
- سامانه انتشار نتایج پژوهش دانشگاه
- اداره کتب و انتشارات دانشگاه
- پایگاه مجلات دانشگاه
- اداره علم سنجی دانشگاه
- کتابخانه ملی پزشکی آمریکا

صفحه نخست
کتابخانه مرکزی
مقالات COVID-19
خط مشی و آیین نامه منابع دیجیتال
منابع الکترونیک
فهرست الفبایی منابع الکترونیک
راهنمای آموزشی
کارگاه های آموزشی
مستندات اطلاع رسانی منابع الکترونیک
آمار استفاده دانشگاه از منابع الکترونیک
فرم سفارش منابع الکترونیکی
تازه های کتابخانه
راهنمای تنظیم VPN
خدمات مشاوره استفاده از منابع الکترونیک

Web of science

دسترسی از داخل دانشگاه (منابع دیجیتال)



دسترسی از داخل دانشگاه (منابع دیجیتال)

بایگ های اطلاعاتی جامع comprehensive database

PubMed

Google scholar

Web of Science

ULRICH'S
GLOBAL SERIALS DIRECTORY

ProQuest

Scopus

JCR
Journal Citation Report

InCites Essential
Science Indicators (ESI)

ClinicalKey

Cochrane
Library

UpToDate®

نشریات الکترونیکی E-Journal

ScienceDirect

Springer

WILEY
ONLINE LIBRARY

ProQuest

EBSCOhost

ClinicalKey

SAGE

The NEW ENGLAND
JOURNAL of MEDICINE

BMJ Journ

Select a database

The screenshot shows the Web of Science website interface. At the top, there is a navigation bar with links to various services: Web of Science, InCites, Journal Citation Reports, Essential Science Indicators, EndNote, Publons, Kopernio, and Master Journal List. On the right side of the navigation bar, there are user options: nahid, Help, and English. The main header area includes the 'Web of Science' logo and the Clarivate Analytics logo. Below the header, there are navigation links for Tools, Searches and alerts, Search History, and Marked List. The central part of the page features a search input field with the text 'Example: oil spill' and a 'Search' button. To the left of the search field, there are sections for 'Basic Search' and 'Timespan' (set to 'All years (1900 - 2020)'). A dropdown menu is open under the 'Select a database' label, listing several databases. A red arrow points to the 'Web of Science Core Collection' option, and a red bracket highlights the entire dropdown menu. The 'KCI-Korean Journal Database (1980-present)' is highlighted in blue, and its description is visible in a side panel: 'Provides access to articles from multidisciplinary journals covered in KCI. KCI is managed by the National Research Foundation of Korea and contains bibliographic information for scholarly literature published in Korea.' Below this description is a bullet point: 'Search in Korean or English.'

Web of Science

Clarivate Analytics

Tools Searches and alerts Search History Marked List

Select a database Web of Science Core Collection

All Databases

Web of Science Core Collection

BIOSIS Citation Index

Current Contents Connect

Data Citation Index

Derwent Innovations Index

KCI-Korean Journal Database

MEDLINE®

Russian Science Citation Index

KCI-Korean Journal Database (1980-present)

Provides access to articles from multidisciplinary journals covered in KCI. KCI is managed by the National Research Foundation of Korea and contains bibliographic information for scholarly literature published in Korea.

- Search in Korean or English.

Search Search tips

More information for new users

Web of science

Search_input.do?product=WOS&search_mode=GeneralSearch&SID=7DosOSB8dTUCLx4Pdwq&preferencesSaved=

Web of Science InCites Journal Citation Reports Essential Science Indicators EndNote Publons Kopernio Master Journal List **Sign In** Help English

Web of Science

Clarivate Analytics

Tools Searches and alerts **Search History** Marked List

Select a database Web of Science Core Collection

**مشاهده جستجوهای موفق
پیشین**

Basic Search Author Search^{BETA} Cited Reference Search Advanced Search Structure Search

Example: oil spill* mediterranean Topic Search Search tips

+ Add row | Reset

Timespan All years (1900 - 2020)

More settings



About Passwords

- If you are registering for the first time, then you must create a password to access your account. The password cannot match your user name (e-mail address). A password cannot match any of your four previous passwords.
- A password must be **eight** or more characters in length. It must have at least **one number, one alphabetic character, and one special character such as:**
- Exclamation (!)
- At sign (@)
- Pound (#)
- Dollar (\$)
- Percent (%)
- Carat (^)
- Asterisk (*)
- Left and right brackets ()
- Tilde (~)
- Bar (|)
- Backslash (\)
- and other special characters

Sign in

- To access *Web of Science* personalization features, please sign in or register.
- As a registered user, you can:
- Set a preference to start your session in a specific database or product
- Save searches in the *Web of Science*
- Save a Marked List to recall for later use
- Export up to 5000 records at one time
- Add references to your *EndNote* Library
- Automatically sign in every time you access *Web of Science*.

Sign in

- To access your search history saved in the Web of Science, please sign in or register.

Saving your search history in the Web of Science lets you:

Create email alerts.

Access your saved search history from any computer at your institution

Open your saved search history directly from the Web of Science

Search history

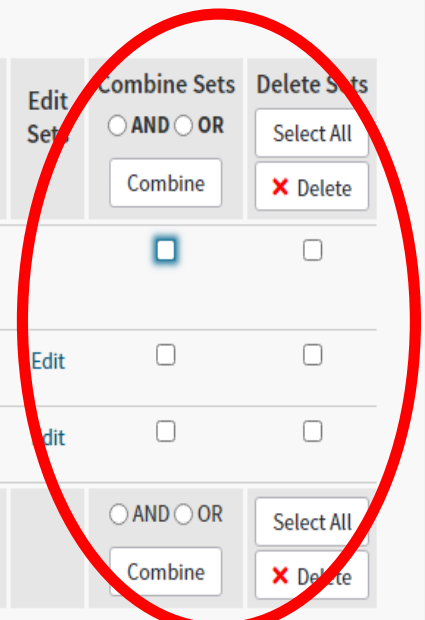
Search History

Web of Science Core Collection ▾

Save History / Create Alert

Open Saved History

Set	Results		Edit Set	Combine Sets	Delete Sets
# 3	25,584	TOPIC: (breast cancer) Refined by: SOURCE TITLES: (CANCER RESEARCH) <i>Indexes=SCI-EXPANDED, SSCI, A&HCI, CPCI-S, CPCI-SSH, BKCI-S, BKCI-SSH, ESCI, CCR-EXPANDED, IC Timespan=All years</i>		<input type="radio"/> AND <input type="radio"/> OR Combine	Select All Delete
# 2	570,780	TOPIC: (breast cancer) <i>Indexes=SCI-EXPANDED, SSCI, A&HCI, CPCI-S, CPCI-SSH, BKCI-S, BKCI-SSH, ESCI, CCR-EXPANDED, IC Timespan=All years</i>	Edit	<input type="checkbox"/>	<input type="checkbox"/>
# 1	570,780	TOPIC: (breast cancer) <i>Indexes=SCI-EXPANDED, SSCI, A&HCI, CPCI-S, CPCI-SSH, BKCI-S, BKCI-SSH, ESCI, CCR-EXPANDED, IC Timespan=All years</i>	Edit	<input type="checkbox"/>	<input type="checkbox"/>



روی هر کدام از سه گزینه کلیک کنیم صفحه ای باز می شود شامل گزینه های جهت اعمال تغییرات و ویرایش ها مثل

●●●●inactive

Web of Science InCites Journal Citation Reports Essential Science Indicators EndNote Publons Kopernio Master Journal List nahid Help English

Web of Science

Clarivate Analytics

Tools Searches and alerts Search History Marked List

Select a database Web of Science Core Collection

Basic Search Author Search^{BETA} Cited Reference Search Advanced Search Structure Search

breast cancer Topic Search Search tips

+ Add row | Reset

Timespan All years (1900 - 2020)

More settings

Basic search

Select a database

انتخاب فیلد مورد نظر

Basic Search Author Search^{BETA} Cited Reference Search Advanced Search Structure Search

Example: [Search tips](#)

Topic
Searches title, abstract, author keywords, and Keywords Plus.
Example: robot* control* "input shaping"
[Learn More](#)

Topic
Title
Author
Publication Name
Year Published
Funding Agency
Organization-Enhanced
All Fields

(To save these permanently, [sign in](#) or [register](#).)

Timespan

More settings [▲](#)

Web of Science Core Collection: Citation Indexes

- Science Citation Index Expanded (SCI-EXPANDED) --1900-present
- Social Sciences Citation Index (SSCI) --1900-present
- Arts & Humanities Citation Index (A&HCI) --1975-present
- Conference Proceedings Citation Index- Science (CPCI-S) --1990-present
- Conference Proceedings Citation Index- Social Science & Humanities (CPCI-SSH) --1990-present
- Book Citation Index- Science (BKCI-S) --2005-present
- Book Citation Index- Social Sciences & Humanities (BKCI-SSH) --2005-present
- Emerging Sources Citation Index (ESCI) --2015-present

Web of Science Core Collection: Chemical Indexes

Activate Windows
Go to PC settings to activate Windows.

صفحه نتایج

Results: 2,530,751
(from Web of Science Core Collection)

You searched for: TOPIC: (cancer)
...More

Create an alert

Refine Results

Search within results



Filter results by:

- Highly Cited in Field (16,878)
- Hot Papers in Field (356)
- Open Access (843,126)
- Associated Data (34,612)

Refine

Publication Years

Sort by: Date Times Cited Usage Count Relevance More

ایتم های sort نتایج

آنالیز نتایج

1 of 10,000

Select Page

Export...

Add to Marked List



1. A VHH-Based Anti-MUC1 Chimeric Antigen Receptor for Specific Retargeting of Human Primary T Cells to MUC1-Positive Cancer Cells

By: Rajabzadeh, Alireza; Rahbarzadeh, Fatemeh; Ahmadvand, Davoud; et al.

CELL JOURNAL Volume: 22 Issue: 4 Pages: 502-513 Published: WIN 2021

Free Full Text from Publisher View Abstract

2. Diosgenin and 4-Hydroxyisoleucine from Fenugreek Are Regulators of Genes Involved in Lipid Metabolism in The Human Colorectal Cancer Cell Line SW480

By: Mohammad-Sadeghipour, Maryam; Mahmoodi, Mehdi; Karimabad, Mojgan Noroozi; et al.

CELL JOURNAL Volume: 22 Issue: 4 Pages: 514-522 Published: WIN 2021

Free Full Text from Publisher View Abstract

3. Protection against Dextran Sulfate Sodium-Induced Ulcerative Colitis in Mice by Neferine, A Natural Product from Nelumbo nucifera Gaertn

By: Min, Xiangjing; Guo, Yanling; Zhou, Yishan; et al.

CELL JOURNAL Volume: 22 Issue: 4 Pages: 523-531 Published: WIN 2021

Analyze Results

Citation Report feature not available. [?]

Times Cited: 0
(from Web of Science Core Collection)

Usage Count

Times Cited: 0
(from Web of Science Core Collection)

Usage Count

Times Cited: 0
(from Web of Science Core Collection)

Usage Count

نتیجه کلیک روی یکی از مقالات



Search Search Results

Tools ▾ Searches and alerts ▾ Search History Marked List

Full Text Options ▾

Export...

Add to Marked List

◀ 1 of 868,466 ▶

A VHH-Based Anti-MUC1 Chimeric Antigen Receptor for Specific Retargeting of Human Primary T Cells to MUC1-Positive **Cancer** Cells

By: Rajabzadeh, A (Rajabzadeh, Alireza)^[1]; Rahbarizadeh, F (Rahbarizadeh, Fatemeh)^[2]; Ahmadvand, D (Ahmadvand, Davoud)^[3]; Salmani, MK (Salmani, Maryam Kabir)^[4]; Hamidieh, AA (Hamidieh, Amir Ali)^[1,5]

CELL JOURNAL

Volume: 22 Issue: 4 Pages: 502-513

DOI: 10.22074/cellj.2021.6917

Published: WIN 2021

Document Type: Article

[View Journal Impact](#)

Abstract

Objective: Immunotherapy with redirected T cells that express a chimeric antigen receptor (CAR) is a promising prospect in **cancer** treatment. Most CARs use murine-derived single-chain variable fragments (scFvs) as an antigen targeting moiety, which may lead to host immunogenic responses and engineered T cell disappearance. It seems that development of less immunogenic CARs, such as CARs composed of the camelid variable domain of heavy chain antibodies (VHHs) may likely overcome this obstacle. Here, we improved the expression of the VHH-based anti-MUC1 CAR gene construct using a third generation lentiviral vector in primary human T cells and assessed its effect on antigen specific targeting, activation and cytotoxicity of redirected human T cells.

Materials and Methods: In this experimental study, we established a second generation novel CAR (VHH-based anti-MUC1 CAR) that contained a camelid-derived anti-MUC1 VHH followed by an IgG3 hinge, a CD28 transmembrane domain and signalling endodomains of CD28 and CD3 zeta. Next, we constructed lentiviral vectors that contained this CAR gene construct using an optimized transiently virus production method and transduced it into human T cells. Cell surface expression of CAR, cytokine secretion and cytotoxic activity were assessed in the transduced CD3(+) T cells.

Results: The transduced T cells had high levels of surface expression of CAR. T cells that expressed anti-MUC1 CAR showed significantly increased secretion of Th1 cytokines, including IL-2, TNF alpha and IFN-gamma, as well as cytotoxic activity upon recognition of MUC1 on tumour cells after co-incubation with

Citation Network

In Web of Science Core Collection

1

Times Cited

Create Citation Alert

All Times Cited Counts

1 in All Databases

[See more counts](#)

40

Cited References

[View Related Records](#)

New! You may also like ... BETA

The Immunomodulatory Effect of Radiofrequency Electromagnetic Field on Serum Cytokine Levels in A Mouse Model of Hindlimb Unloading.
CELL JOURNAL (2021)

Searchs and alerts

Citation alerts

[Back to previous page](#)

Sort by: Author name - ascending ▾

Author/Title	Times Cited	Alert Status
<div data-bbox="264 951 815 1076"><p>Her, J. BRCA1 and PALB2 in a Messy Breakup</p></div>	<div data-bbox="981 989 1006 1019"><p>0</p></div>	<div data-bbox="1244 951 1470 1051"><p>Inactive Active</p></div>
<div data-bbox="274 1105 807 1143"><p>Email recipients: nh56353@gmail.com Edit</p></div>		
<div data-bbox="274 1193 819 1232"><p>No longer want to receive alerts? Delete Alert </p></div>		

[Less info ^](#)

Author search

← → ↻ S&SID=8EBCC6y4FIYq5iUNwyq ☆ ↓ ↻ ⚙

Web of Science InCites Journal Citation Reports Essential Science Indicators EndNote Publons Kopernio Master Journal List Sign In Help English

Web of Science

Clarivate Analytics

Search Tools Searches and alerts Search History Marked List

Select a database Web of Science Core Collection

Basic Search **Author Search** Cited Reference Search Advanced Search

جستجو بر اساس نام نویسنده

Name Search **Web of Science ResearcherID or ORCID Search** ID جستجو بر اساس

Search for an author to see their author record. An author record is a set of Web of Science Core Collection documents likely authored by the same person. You can claim and verify your author record from your author record page.

Last name First name and middle initial(s)

SAMADBEIK MAHNAZ

+ Include alternative name | Reset

Find Need help searching? ⓘ

نتایج

Results: 2 author records i BETA

(from Web of Science Core Collection)

SAMADBEIK,MAHNAZ

Refine results

Reset

Sorted by **Relevance** ▾

◀ 1 of 1 ▶

Author name



Select all

Select records that contain documents by the same author

[View Combined Record](#)

Samadbeik, Mahnaz

Samadbeik, M.

Organizations



Iran University of Medical Sciences

Lorestan University of Medical Sciences

Tehran University of Medical Sciences

Subject categories



Pharmacology & Pharmacy

Health Care Sciences & Services

Medical Informatics

General & Internal Medicine

Computer Science

1. **Samadbeik, Mahnaz** Web of Science ResearcherID: U-7876-2017

Alternative name: Samadbeik, M.
Lorestan University of Medical Sciences
Social Determinants Hlth Res Ctr
KHORRAMABAD, IRAN

Documents

14

Years

2013 - 2020

Top Journals

JOURNAL OF RESEARCH IN PHARMACY PRACTICE , IRANIAN RED
CRESCENT MEDICAL JOURNAL , APPLIED CLINICAL INFORMATICS

[Recent publications](#) ▾

2. **Samadbeik, Mahnaz**

Alternative name:
Lorestan University of Medical Sciences
Dept Hlth Informat Technol
KHORRAMABAD, IRAN

Documents

2

Years

2019

Top Journals

IRANIAN JOURNAL OF PHARMACEUTICAL RESEARCH , METHODS OF
INFORMATION IN MEDICINE

ایجاد پروفایل پابلونز
جهت merge و ...



View Full Profile on Publons

Verify Your Author Record

Get your own verified author record by clicking "Claim This Record" on your author record page. Search for your author record .

Citation Network

H-index

6

Sum of Times Cited

66

Citing Articles

55

مجموع استنادات نویسنده از

WOS

تعداد کل مقالات استناد

نویسنده به نویسنده

View full Citation Report

گزارشات

استنادی

Author Position

First 38%

موقعیت

نویسنده

Last 31%

Corresponding 31%

Author Network

Top co-authors

Ahmadi, Maryam (5)
Garavand, Ali (5)
Sadoughi, Farahnaz (4)
Bastani, Peivand (4)
Dinarvand, Rassoul (2)

پنج نویسنده برتر در
رکورد این نویسنده

VIEWING 2 COMBINED AUTHOR RECORDS

Samadbeik, Mahnaz

Claimed by the author BETA

Lorestan University of Medical Sciences
Social Determinants Hlth Res Ctr
KHORRAMABAD, IRAN

Web of Science ResearcherID: U-7876-2017

Alternative names: Samadbeik, Mahnaz Samadbeik, M.

Organizations:

2013-2020 Lorestan University of Medical Sciences
2014-2014 Iran University of Medical Sciences
2013-2013 Tehran University of Medical Sciences

نمایش کل نتایج برای اکسپورت،
انالیز، لینک فول تکس



16 publications from Web of Science Core Collection

View as a set of results to export, analyze, and link to full text

Sorted by Date: newest first

Filter By:

All Publications



1 of 1

A systematic review of the attributes of electronic personal health Records for Patients with multiple sclerosis

TIMES CITED

0

Aslani, Nasim ; Ahmadi, Maryam ; Samadbeik, Mahnaz

sclerosis

Aslani, Nasim ; Ahmadi, Maryam ; Samadbeik, Mahnaz

HEALTH AND TECHNOLOGY

Volume 10 Issue 3 Page 587-599 Published 2020

Effective Factors in Adoption of Mobile Health Applications between Medical Sciences Students Using the UTAUT Model

TIMES CITED

1

Garzavand, Ali ; Samadbeik, Mahnaz ; Nadri, Hamed ...More

METHODS OF INFORMATION IN MEDICINE

Volume 58 Issue 4-5 Page 131-139 Published 2019

Main Elements of National Model of Electronic Prescription System from Physicians' Point of View: A Case Study in a Developing Country

TIMES CITED

0

Samadbeik, Mahnaz ; Ahmadi, Maryam ; Sadoughi, Farahnaz ...More

IRANIAN JOURNAL OF PHARMACEUTICAL RESEARCH

Volume 18 Issue 4 Page 2204-2215 Published 2019

Components Affecting Pharmaceutical Strategic Purchasing: A Scoping Review

TIMES CITED

1

Bastani, Peivand ; Ghanbarzadegan, Arash ; Vatanikhah, Soudabeh ; Samadbeik, Mahnaz ...Less

HEALTH SERVICES INSIGHTS

Volume 12 Published 2019

Qualitative analysis of national documents on health care services and pharmaceuticals' purchasing challenges: evidence from Iran

TIMES CITED

0

Full citation reports

Search

Tools ▾

Searches and alerts ▾

Search History

Marked List

Citation report for 16 results from Web of Science Core Collection between 1900 ▾ and 2021 ▾

You searched for: Article Group for: Samadbelk, Mahnaz ...More

This report reflects citations to source items indexed within Web of Science Core Collection. Perform a Cited Reference Search to include citations to items not indexed within Web of Science Core Collection.

Export Data: ▾

Total Publications

16 Analyze



2000

2019

h-Index

6

Average citations per item

4.13

Sum of Times Cited

66

Without self citations

56

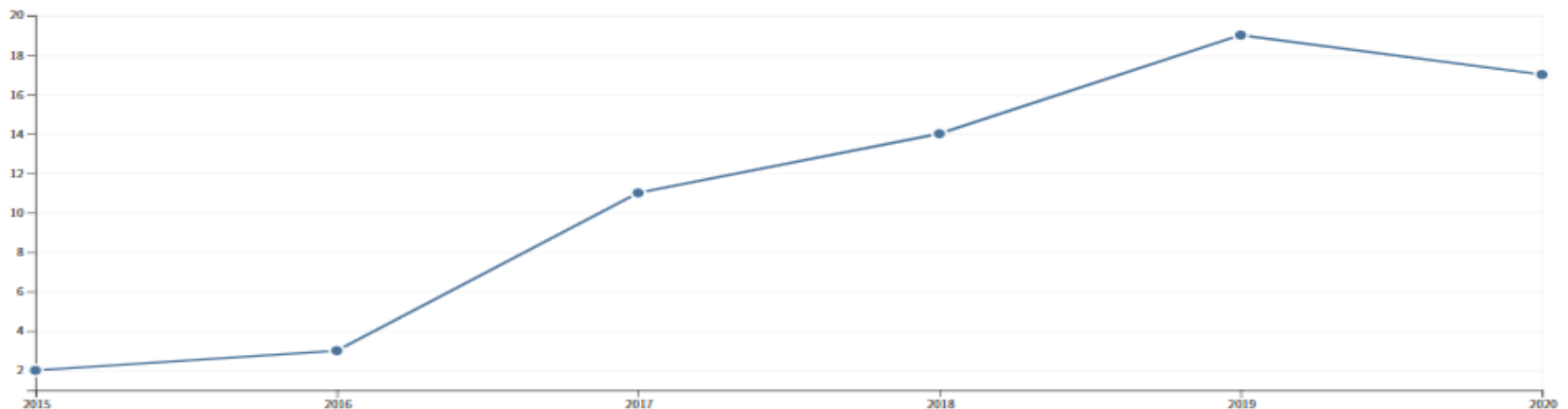
Citing articles

55 Analyze

Without self citations

49 Analyze

Sum of Times Cited per Year



Full citation reports

Sort by: [Times Cited](#) [Date](#) [More](#) ◀ 1 of 2 ▶

[How are these totals calculated?](#)

Use the checkboxes to remove individual items from this Citation Report

or restrict to items published between and

	2017	2018	2019	2020	2021	Total	Average Citations per Year
<input type="checkbox"/>	11	14	19	17	0	66	11.00
<input type="checkbox"/> 1. Pharmaceutical strategic purchasing requirements in Iran: Price interventions and the related effective factors By: Bastani, Pelvand; Dinarvand, Rasoul; Samadbeik, Mahnaz; et al. JOURNAL OF RESEARCH IN PHARMACY PRACTICE Volume: 5 Issue: 1 Pages: 35-42 Published: JAN-MAR 2016	2	4	2	3	0	12	2.40
<input type="checkbox"/> 2. A Copmarative Review of Electronic Prescription Systems: Lessons Learned from Developed Countries By: Samadbeik, Mahnaz; Ahmadi, Maryam; Sadoughi, Farahnaz; et al. JOURNAL OF RESEARCH IN PHARMACY PRACTICE Volume: 6 Issue: 1 Pages: 3-11 Published: JAN-MAR 2017	1	5	3	2	0	11	2.75
<input type="checkbox"/> 3. Qualitative analysis of national documents on health care services and pharmaceuticals' purchasing challenges: evidence from Iran By: Bastani, Pelvand; Samadbeik, Mahnaz; Dinarvand, Rassoul; et al. BMC HEALTH SERVICES RESEARCH Volume: 18 Article Number: 410 Published: JUN 5 2018	0	0	2	6	0	8	2.67
<input type="checkbox"/> 4. Designing a Medical Tourism Website: A Qualitative Study By: Samadbeik, Mahnaz; Asadi, Heshmatollah; Mohsent, Mohammad; et al. IRANIAN JOURNAL OF PUBLIC HEALTH Volume: 46 Issue: 2 Pages: 249-257 Published: 2017	1	2	3	1	0	7	1.75
<input type="checkbox"/> 5. Factors Affecting Acceptance of Hospital Information Systems Based on Extended Technology Acceptance Model: A Case Study in Three Paraclinical Departments By: Nadri, Hamed; Rahimi, Bahlol; Afshar, Hadi Lotfnezhad; et al. APPLIED CLINICAL INFORMATICS Volume: 9 Issue: 2 Pages: 238-247 Published: APR 2018	0	1	3	2	0	6	2.00
<input type="checkbox"/> 6. A Theoretical Approach to Electronic Prescription System: Lesson Learned from Literature Review By: Samadbeik, Mahnaz; Ahmadi, Marvam; Asanjan, Seved Masoud Hosseini	3	1	2	0	0	6	0.75

View as a set of results to export, analyze, and link to full text

صفحه نتایج مربوط به

Web of Science



Search

Tools Searches and alerts Search History Marked List

Results: 16

(in your subscription)

Back to author record for:
Samadbeik, Mahnaz

For: AUTHOR: Samadbeik, Mahnaz
...More

Refine Results

Search within results for...

Filter results by:

Open Access (9)

Refine

Publication Years

- 2019 (4)
- 2018 (3)
- 2017 (4)
- 2016 (2)
- 2014 (2)

Sort by: Date Times Cited Usage Count Relevance More

1 of 2

Select Page [A Export...](#) [Add to Marked List](#)

1. **A systematic review of the attributes of electronic personal health Records for Patients with multiple sclerosis**

By: Aslani, Nasim; Ahmadi, Maryam; Samadbeik, Mahnaz

HEALTH AND TECHNOLOGY Volume: 10 Issue: 3 Pages: 587-599 Published: MAY 2020

Early Access: DEC 2019

[Full Text from Publisher](#) [View Abstract](#)

Analyze Results

Create Citation Report

Times Cited: 0
(from Web of Science Core Collection)

Usage Count

2. **Effective Factors in Adoption of Mobile Health Applications between Medical Sciences Students Using the UTAUT Model**

By: Garavand, Ali; Samadbeik, Mahnaz; Nadri, Hamed; et al.

METHODS OF INFORMATION IN MEDICINE Volume: 58 Issue: 4-5 Pages: 131-139 Published: NOV 2019

[Full Text from Publisher](#) [View Abstract](#)

Times Cited: 1
(from Web of Science Core Collection)

Usage Count

3. **Main Elements of National Model of Electronic Prescription System from Physicians' Point of View: A Case Study in a Developing Country**

By: Samadbeik, Mahnaz; Ahmadi, Maryam; Sadoughi, Farahnaz; et al.

IRANIAN JOURNAL OF PHARMACEUTICAL RESEARCH Volume: 18 Issue: 4 Pages: 2204-2215 Published: FAI 2019

Times Cited: 0
(from Web of Science Core Collection)

Usage Count

publons

- Use Publons to track your publications, citation metrics, peer reviews, and journal editing work in a single, easy-to-maintain profile.
- All your publications, instantly imported from *Web of Science*, ORCID, or your bibliographic reference manager (e.g. EndNote or Mendeley).
- Trusted citation metrics, automatically imported from the *Web of Science Core Collection*.
- Correct author attribution, with your unique [ResearcherID](#) automatically added to the publications you claim in *Web of Science* collections.
- Your verified peer review and journal editing history, powered by partnerships with thousands of scholarly journals.
- Publons CV summarising your scholarly impact as an author, editor and peer reviewer.

Cited reference search

جهت پیدا کردن مقالاتی که به اثر یک شخص استناد می کنند.

گام اول: وارد کردن اطلاعات رفرنس استناد شده

***نکته: فیلدها با اپراتور **AND** ترکیب می شوند.

گام دوم : انتخاب رفرنس های استناد شده و کلیک روی Finish

search

Select a database Web of Science Core Collection

Basic Search Author Search ^{BETA} Cited Reference Search Advanced Search Structure Search

Find the articles that cite a person's work.

Step 1: Enter information about the cited work. Fields are combined with the Boolean AND operator.

shahsavari, farhad Cited Author

Select from Index انتخاب از لیست (نام انتشارات یا نویسنده)

2017 Cited Year(s)

Example: 1943 or 1943-1945 Cited Year(s)

Search

View our Cited Reference Search tutorial.

+ Add row | Reset

Timespan

All years (1900 - 2020)

More settings

(To save these permanently, sign in or register.)

Web of Science Core Collection: Citation Indexes

- Science Citation Index Expanded (SCI-EXPANDED) --1900-present
- Social Sciences Citation Index (SSCI) --1900-present
- Arts & Humanities Citation Index (A&HCI) --1975-present
- Conference Proceedings Citation Index- Science (CPCI-S) --1990-present
- Conference Proceedings Citation Index- Social Science & Humanities (CPCI-SSH) --1990-present
- Book Citation Index - Science (BKCI-S) --2005-present

Cited reference search

Search

Tools ▾ Searches and alerts ▾ Search History Marked List

Cited Reference Search

Find the articles that cite a person's work.

Step 2: Select cited references and click "Finish Search."

Hint: Look for [cited reference variants](#) (sometimes different pages of the same article are cited or papers are cited incorrectly).

[View our Cited Reference Search tutorial.](#)

CITED REFERENCE INDEX

References: 1 - 2 of 2

Showing results per page

1 of 1 ▶

* "Select All" adds the first 1000 matches to your cited reference search, not all matches.

⏴ Select Page Select All * Clear

📄 Export Table

Finish Search

Select	Cited Author	Cited Work [Expand Titles]	Title [Expand Titles]	Early Access Year ***	Year	Volume	Issue	Page	Identifier	Citing Articles **
<input type="checkbox"/>	Amiri, Ali...Shahsavar, Farhad + [Show all authors]	GENOM DATA	Mannose-Binding Lectin (MBL) gene polymorphisms in...		2017	12		146	DOI: 10.1016/j.gdata.2017.05.005	8
<input type="checkbox"/>	Shahsavar, Farhad + [Show all authors]	GENOM DATA	A genomic study on distribution of human leukocyte...		2017	11		3	DOI: 10.1016/j.gdata.2016.11.012	9

⏵ Select Page Select All * Clear

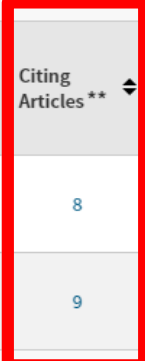
📄 Export Table

Finish Search

* "Select All" adds the first 1000 matches to your cited reference search, not all matches.

** Citing Article counts are for all editions and all years, not just for your current editions and year limits.

*** Early Access Year is when a work is fully peer-reviewed, citable, and published but has not been assigned a volume/issue/page number.



Web of Science



Search

Tools Searches and alerts Search History Marked List

Results: 16

(from Web of Science Core Collection)

You searched for: CITED AUTHOR: (shahsavar,farhad) AND CITED YEAR: (2017) ...More

Create an alert

Refine Results

Search within results for...

Filter results by:

Open Access (9)

Refine

Publication Years

- 2020 (2)
- 2019 (4)
- 2018 (5)
- 2017 (5)

Sort by: Date Times Cited Usage Count More

1 of 2

Select Page Export... Add to Marked List

1. Association between polymorphisms in mannose-binding lectin 2 gene with pulmonary tuberculosis susceptibility

By: Shen, Wenhao; Xiao, Li; Li, Yang; et al.

HEREDITAS Volume: 157 Issue: 1 Article Number: 33 Published: AUG 3 2020

Free Full Text from Publisher View Abstract

Analyze Results Create Citation Report

Times Cited: 0 (from Web of Science Core Collection)

Usage Count

2. Influence of sex and body mass index on facial soft tissue thickness measurements in an adult population of southwest of Iran

By: Eftekhari-Moghadam, Ali Reza; Latifi, Seyed Mahmoud; Nazifi, Hamid Reza; et al.

SURGICAL AND RADIOLOGIC ANATOMY Volume: 42 Issue: 5 Pages: 627-633 Published: MAY 2020

Full Text from Publisher View Abstract

Times Cited: 0 (from Web of Science Core Collection)

Usage Count

3. Genetic Polymorphisms of IFNG and IFNGR1 with Latent Tuberculosis Infection

By: Wu, Shouquan; Liu, Xiangmin; Wang, Yu; et al.

DISEASE MARKERS Volume: 2019 Article Number: 8410290 Published: OCT 10 2019

Free Full Text from Publisher View Abstract

Times Cited: 3 (from Web of Science Core Collection)

Usage Count

- Cited Reference Variants

- Every cited reference in the Cited Reference Index contains enough information to uniquely identify the document. Because only essential bibliographic information is captured, and because author names and source publication titles are unified as much as possible, the same reference cited in two different records should appear the same way in the database. This unification is what makes possible the Times Cited number on the Full Record page.

- However, not all references to the same publication can be unified. As a consequence, a cited reference may have variations in the product.

- For example, consider these variations of a reference to an article by A.J. Bard published in volume 374 of Nature:

- BARD AJ NATURE 1995 374 13 [View Record](#)

- BARD AJ NATURE 1995 13 374

- The first reference contains the correct volume number and other bibliographic information. The View Record link takes you to the Full Record, which has a Times Cited count of 31.

- The second reference contains a different volume number and it does not have a View Record link. Because a journal cannot have two different volume numbers in the same publication year, it is obvious that this is an incorrect reference to the same article.

Advanced search

- Use field tags, Boolean operators, parentheses, and query sets to create your query. Results will appear in the Search History table at the bottom of the page.

Select a database Web of Science Core Collection

Basic Search Author Search ^{BETA} Cited Reference Search **Advanced Search** Structure Search

Use field tags, Boolean operators, parentheses, and query sets to create your query. Results will appear in the Search History table at the bottom of the page. (Learn more about Advanced Search)

Example: TS=(nanotub* AND carbon) NOT AU=Smalley RE #1 NOT #2 more examples | view the tutorial

TI=(diabetics) AND PY=(2017)

Search

Restrict results by languages and document types:

All languages	All document types
English	Article
Afrikaans	Abstract of Published Item
Arabic	Art Exhibit Review

Timespan

All years (1900 - 2020)

More settings

Booleans: AND, OR, NOT, SAME, NEAR

Field Tags:

TS= Topic	SA= Street Address
TI= Title	CI= City
AU= Author [Index]	PS= Province/State
AI= Author Identifiers	CU= Country/Region
GP= Group Author [Index]	ZP= Zip/Postal Code
ED= Editor	FO= Funding Agency
SO= Publication Name [Index]	FG= Grant Number
DO= DOI	FT= Funding Text
PY= Year Published	SU= Research Area
CF= Conference	WC= Web of Science Category
AD= Address	IS= ISSN/ISBN
OG= Organization-Enhanced [Index]	UT= Accession Number
OO= Organization	PMID= PubMed ID
SG= Suborganization	ALL= All Fields
AB= Abstract	
AK= Author Keywords	
KP= Keyword Plus	

* ترکیب نتایج موجود در history با AND , OR

* امکان ویرایش یا حذف history

Search History:

Set	Results		Edit Sets	Combine Sets	Delete Sets
		Save History / Create Alert		<input type="radio"/> AND <input type="radio"/> OR	Select All
		Open Saved History		Combine	Delete
# 2	76,125	ti=(heart diseases) <i>Indexes=SCI-EXPANDED, SSCI, A&HCI, CPCI-S, CPCI-SSH, BKCI-S, BKCI-SSH, ESCI, CCR-EXPANDED, IC Timespan=All years</i>	Edit	<input type="checkbox"/>	<input type="checkbox"/>
# 1	7,508	ti=(diabetics) and py=(2017) <i>Indexes=SCI-EXPANDED, SSCI, A&HCI, CPCI-S, CPCI-SSH, BKCI-S, BKCI-SSH, ESCI, CCR-EXPANDED, IC Timespan=All years</i>	Edit	<input type="checkbox"/>	<input type="checkbox"/>
				<input type="radio"/> AND <input type="radio"/> OR	Select All

#1 AND #2

Search

Restrict results by languages and document types:

All languages: English, Afrikaans, Arabic

All document types: Article, Abstract of Published Item, Art Exhibit Review

Timespan: All years (1900 - 2020)

More settings

Search History:

Set	Results		Edit Sets	Combine Sets	Delete Sets
# 3	21	#2 AND #1 <i>Indexes=SCI-EXPANDED, SSCI, A&HCI, CPCI-S, CPCI-SSH, BKCI-S, BKCI-SSH, ESCI, CCR-EXPANDED, IC Timespan=All years</i>	Edit	<input type="checkbox"/> AND <input type="checkbox"/> OR Combine	Select All Delete
# 2	76,125	ti=(heart diseases) <i>Indexes=SCI-EXPANDED, SSCI, A&HCI, CPCI-S, CPCI-SSH, BKCI-S, BKCI-SSH, ESCI, CCR-EXPANDED, IC Timespan=All years</i>	Edit	<input type="checkbox"/> AND <input type="checkbox"/> OR Combine	Select All Delete
# 1	7,508	ti=(diabetics) and py=(2017) <i>Indexes=SCI-EXPANDED, SSCI, A&HCI, CPCI-S, CPCI-SSH, BKCI-S, BKCI-SSH, ESCI, CCR-EXPANDED, IC Timespan=All years</i>	Edit	<input type="checkbox"/> AND <input type="checkbox"/> OR Combine	Select All Delete

Delete sets

- In this instance, the product marks the **Delete Sets** check box of both the original set marked for deletion and the *referenced set*. You can either delete both sets or neither set.
- **Example 1:** You create a set combination (set #3) that includes sets #1 and #2. You cannot delete set #1 because set #3 (the *referenced set*) is dependent on set #1. You can, however, delete both sets #1 and #3.
- **Example 2:** You create a set (set #2) by using the Refine Results option from the Results page. You cannot delete this set because it is dependent upon the original parent set (set #1). You can, however, delete both sets.

Advanced Search

Advanced Search enables you to form and combine search sets. For example:

Set	Results	
#3	727	#2 AND #1
#2	1,125,241	AD=(Japan OR Russia)
#1	31,082	TI=(cell death OR apoptosis)

Set #3 consists of records in which *cell death* or *apoptosis* appears in the Title and *Japan* or *Russia* appears in the Addresses field.

An advanced search usually begins with at least two queries consisting of search terms prefaced by [field tags](#).

The [Search History](#) table at the bottom of the page displays all successful searches that you ran during the current session. Search sets are listed in the Search History table in reverse numerical order - the most recently created set is at the top of the table.

لینک راهنما

فضاهای اضافی توسط محصول نادیده گرفته می شوند.

قسمتهای مختلف باید با اپراتورهای جستجو متصل شوند

برای ترکیبات مجموعه ، قبل از هر تعداد تنظیم شده ، یک علامت شماره (#) وارد کنید.

فقط از SAME در Address استفاده کنید. هنگامی که در جستجوهای دیگر (مانند موضوع) استفاده می شود ، SAME دقیقاً مانند AND کار می کند.

تعداد کل مجموعه جستجوهایی که می توانید در طول یک جلسه ایجاد کنید ۲۰۰ مجموعه است

برای جستجوی کلمات AND ، OR ، NOT و NEAR. کلمه را در علامت های نقل قول محصور کنید.

EDITS

You can also edit **dependent sets** and search sets that include dependent sets. Dependent sets are search sets that are referenced in other sets. For example, you perform the following searches.

Set	Results	Description	Edit Sets
#3	128,000	#1 AND #2	Edit
#2	539,000	TS=RNA	Edit
#1	943,000	TS=DNA	Edit

You decide that you want to edit set #1 to include the following search terms:
TS=DNA AND TS=Nuclear DNA Fragmentation

In this instance, set #3 is a dependent set and the system automatically re-runs the search query when you edit set #1 and save the query. The Search History table now displays the following results.

Set	Results	Description	Edit Sets
#3	1,220	#1 AND #2	Edit
#2	539,000	TS=RNA	Edit
#1	4,850	TS=DNA AND TS=Nuclear DNA Fragmentation	Edit

Note: The numbers in the Results column in this example do not reflect the actual number of results that the system may return after you edit a set.

structure search

- To perform a structure or compound search, please sign in or register.
- Registering and signing in will allow you to:
- Save your structure or compound search to run again at a later date

Additional benefits of registration include:

- Access Web of Science from anywhere
- Save records directly to an Endnote online library
- Create Citation Alerts and be notified when your work is cited

Basic Search

Author Search ^{BETA}

Cited Reference Search

Advanced Search

Structure Search

Enter a Structure Drawing and/or any desired data. Then click either SEARCH button to process your query. The search will be added to the search history.

Search

Clear

Structure Drawing

Click the structure drawing option to create a structure and insert it into the Query box below. Then select a search mode.

Substructure

Exact Match

E 📄 ↶ ↷ + 🗑️ 📄 ↶ 🌐 🗨️ 📄 ↶ 🏠 🏠 🏠 🏠 🏠 + →

C

N

O

S

H

F

Cl

Br

X

[]_n

🌈

+

-

🗑️

Compound Data

Enter a compound name, biological activity and/or molecular weight. Use the checkboxes to specify a role.

Compound Name:

Compound Biol. Act.: [Biological Activity List](#)

Molecular Weight:

as Reactant as Product as Catalyst as Solvent

Reaction Data

Enter any reaction conditions to be searched, along with desired reaction keyphrases or comments.

Atmosphere: Refluxed Flag

Other: [Terms List](#)

Pressure (Atm):

Time (Hrs):

Temperature (C):

Product Yield:

Reaction Keyphrases: [Keyphrase List](#)

Reaction Comments:

Timespan

[More settings](#) ▼

- جهت جستجوی واکنش ها و ترکیبات شیمیایی
- اگر یک ساختار شیمیایی ترسیم کنید و اصطلاحات را در قسمتهای داده مرکب یا داده واکنش وارد کنید ، وب علم به طور خودکار منطق AND را در مورد درخواست اعمال می کند.
- به عنوان مثال ، اگر یک ساختار شیمیایی ترسیم کرده و اصطلاح فعالیت بیولوژیکی را در Compound Biol act وارد کنید. در این قسمت ، ترکیبات و واکنشهای متناسب با ساختاری که ترسیم کرده اید و فعالیت بیولوژیکی مشخص شده را بازیابی خواهید کرد. این فرض می کند که شما هر دو شاخص شیمیایی را انتخاب کرده اید.

- **About Compound Data**

If your institution subscribes to only the *Index Chemicus* index, then you will see only the Structure Drawing and Compound Data sections when you perform a Compound Data search and/or a Structure Drawing search. The system will not return any reaction records.

- درباره داده های مرکب

- اگر موسسه شما فقط در فهرست *Index Chemicus* مشترک باشد ، هنگام انجام جستجوی *Compound Data* و / یا *Structure Drawing* ، فقط بخشهای *Strawing Drawing* و *Compound Data* را مشاهده خواهید کرد. سیستم هیچگونه سوابق واکنشی را بر نمی گرداند.

- However, if your institution subscribes to both *Index Chemicus* and *Current Chemical Reactions* , then you will see the Reactions Data section as well as the two other sections.

- با این حال ، اگر موسسه شما هم در *Index Chemicus* و هم در واکنش شیمیایی فعلی مشترک باشد ، در این صورت بخش داده های واکنش و همچنین دو بخش دیگر را مشاهده خواهید کرد

Enter a Structure Drawing and/or any desired data. Then click either SEARCH button to process your query. The search will be added to the search history.

Search Clear

Structure Drawing

Click the structure drawing option to create a structure and insert it into the Query box below. Then select a search mode.

Substructure
 Exact Match

Chemical structure drawing interface showing a skeletal structure of a six-membered ring with a double bond and an oxygen atom (likely a cyclic ether or enone derivative). The structure is displayed in the center of the drawing area.

dotmatics
knowledge solutions

محل ترسیم ساختار شیمیایی

Compound Data

Enter a compound name, biological activity and/or molecular weight. Use the checkboxes to specify a role.

Compound Name:

Compound Biol. Act.: Biological Activity List

Molecular Weight:

as Reactant as Product as Catalyst as Solvent

Compound Data

Enter a compound name, biological activity and/or molecular weight. Use the checkboxes to specify a role.

Compound Name:

Compound Biol. Act.:

[Biological Activity List](#)

Molecular Weight:

as Reactant as Product as Catalyst as Solvent

نام ترکیبی ، فعالیت بیولوژیکی و / یا وزن مولکولی را وارد کنید.

Reaction Data

Enter any reaction conditions to be searched, along with desired reaction keyphrases or comments.

Atmosphere:

Refluxed Flag

Other: [Terms List](#)

Pressure (Atm):

Time (Hrs):

Temperature (C):

Product Yield:

Reaction Keyphrases: [Keyphrase List](#)

Reaction Comments:

Reaction Results You searched for: **BIOLOGICAL ACTIVITY (As Reactant OR Product OR Catalyst OR Solvent) (SODIUM-HYDROGEN ANTI-PORTER INHIBITING ACTIVITY OR SODIUM-HYDROGEN ANTI-PORTER INHIBITING ACTIVITY OR SODIUM-HYDROGEN ANTI-PORTER INHIBITING ACTIVITY)[Reactions]**

[\[Go to Compound Results\]](#)

... **Indexes:** SCI-EXPANDED, SSCI, AMHCI, CPCI-S, CPCI-SSH, BKCI-S, BKCI-SSH, ESCI, CCR-EXPANDED, IC ... [Less](#)

Create Alert 📧

[Go to Compound Results ▶](#)

Results: 10

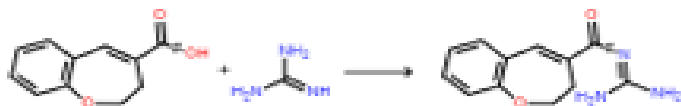
1 of 1 ▶

ایمیل، پرینت، ذخیره

[Add to Marked List \(1\)](#) | [Save to RD File](#) [more options](#)

1. Reaction [Details](#) | [Full Record](#)

جزئیات بیشتر



dotmatics

2. Reaction [Details](#) | [Full Record](#)

Full